

Work Shop Repairs

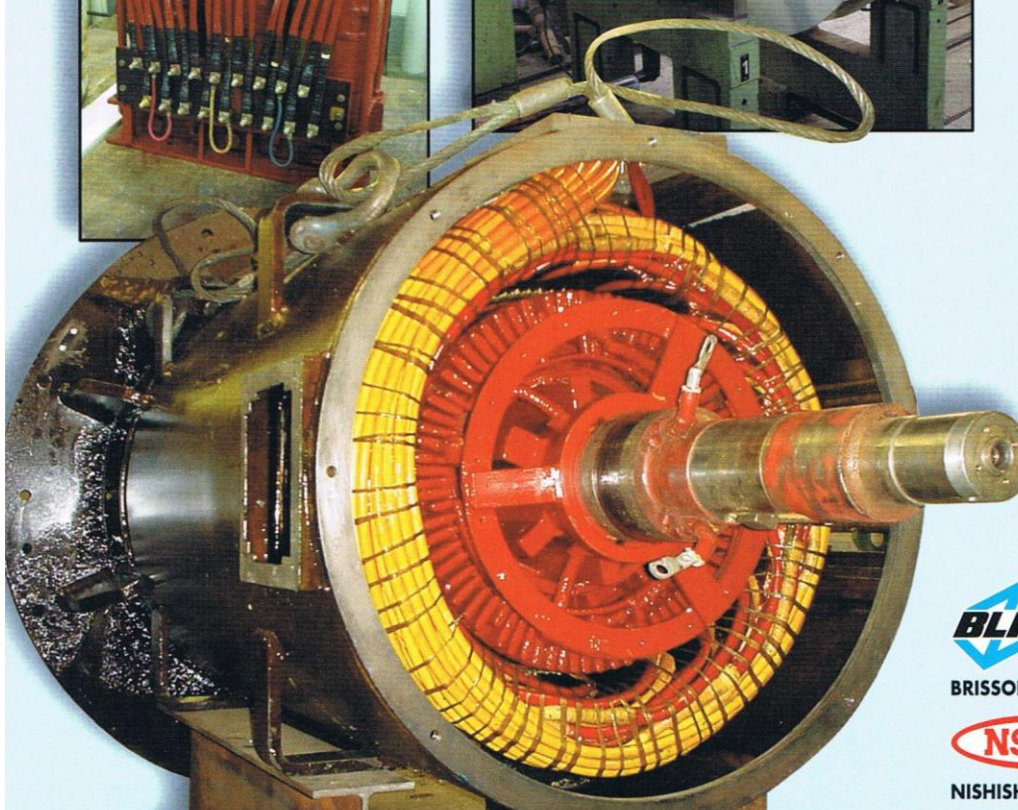
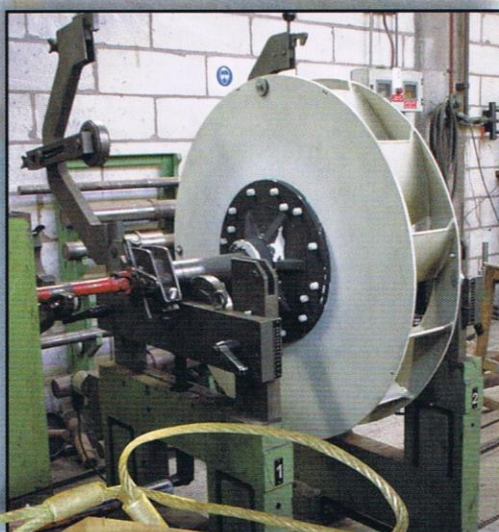
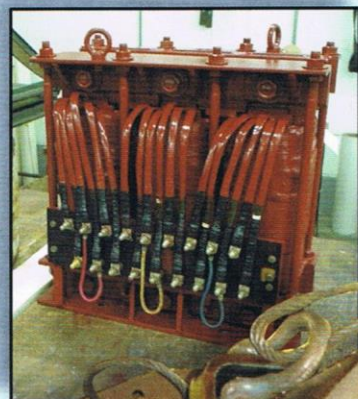
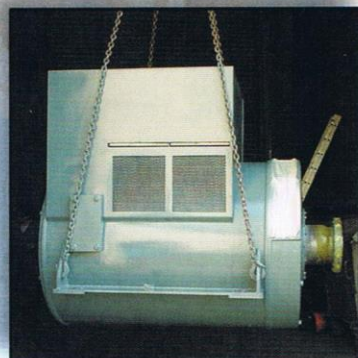
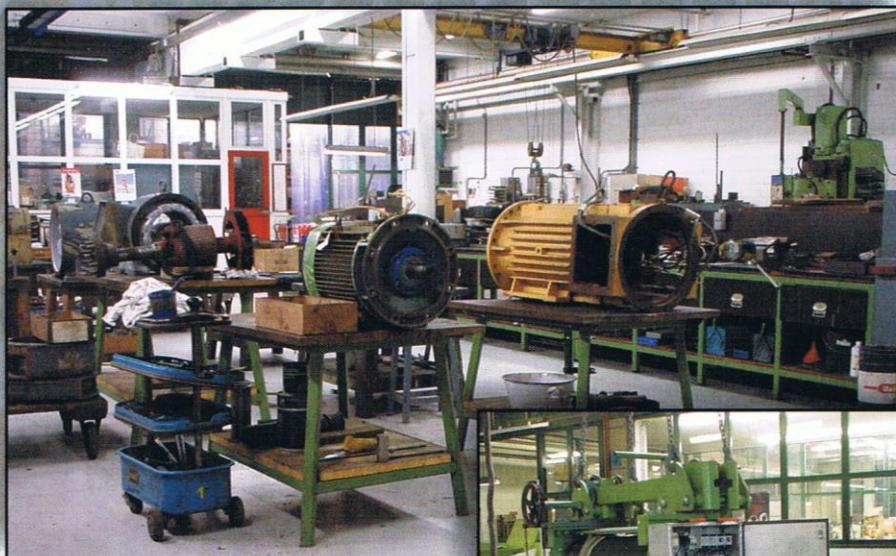
Electrical and Mechanical



Noorderlaan 107
B-2030 Antwerpen
Tel : +32 (0)3.541.20.90
Fax : +32 (0)3.541.82.27
info@electropartners.com

In this section we employ a flexible and highly skilled workforce for the following repairs:

- Repair and rewinding of electric motors AC and DC high and low tension.
- Repair and rewinding of explosion proof electric motors with certificate, approved by the major classification societies.
- Repair and rewinding of AC and DC generators.
- Repair of winches, pumps, cargo gear, deck machinery and compressors.
- Pipe line repairs.
- Machine work: turning, boring, milling, metal spraying.
- All kinds of welding work.



BRISSONNEAU & LOTZ MARINE



NISHISHIBA ELECTRIC Co.,Ltd.



FUJI ELECTRIC Co.,Ltd.





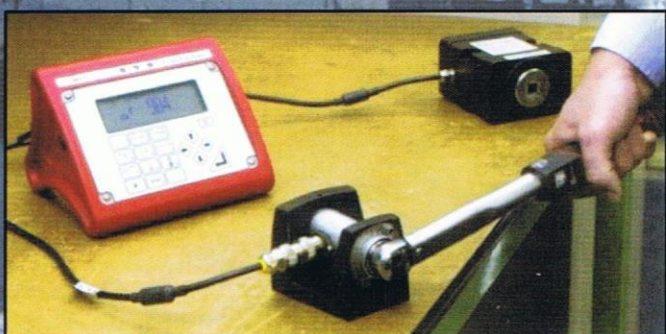
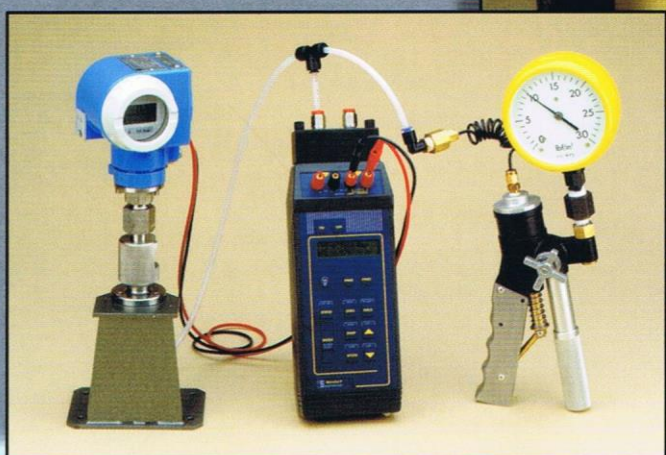
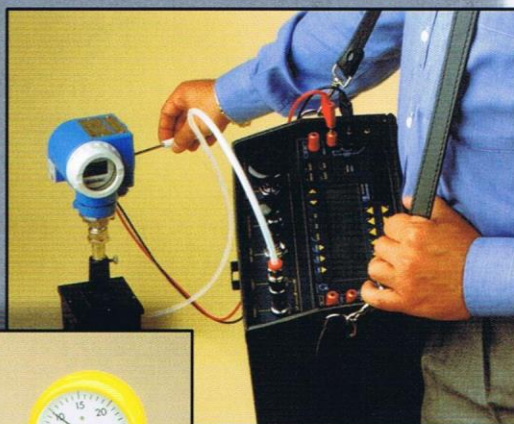
Calibration

Electrical and Mechanical



Our long experience makes it easy to give the best service possible.

We supply following types of certificate: (traceable certificates / UKAS certificates).



Noorderlaan 107
B-2030 Antwerpen
Tel : +32 (0)3.541.20.90
Fax : +32 (0)3.541.82.27
info@electropartners.com

Temperature

- Heat sources (dry well, liquid bath) (-40 ... 600°C)
- Measuring equipment (indicators, sensors, transmitters, loggers and registration) (-25 ... 650°C)
- System calibrations (instrument + sensor)

Humidity

- Air humidity (analogue - digital)
- Transmitters, loggers, recorders (33%, 50%, en 75%)

Mechanical

- Torque screw drivers (up to 25 Nm)
- Torque wrenches (up to 300 Nm)

Electrical

- panel instruments (analogue - digital)
- Multimeters (clamps, testers, insulation...)
- Simulators (current, resistance, Pt100, ...)
- Thermometers without sensors

Pressure

- Manometers cl. 1 to 2500 bar
- Manometers on dead weight tester up to 600 bar
- pumps, transmitters, recorders

15 ppm monitors

- On board calibration of 15 ppm monitors by means of certified master unit

NSDK
NISHISHIBA ELECTRIC Co., Ltd.



BRISSENEAU & LOTZ MARINE

FUJI ELECTRIC
FUJI ELECTRIC Co., Ltd.

